



**EQUIPMENT NEEDED**

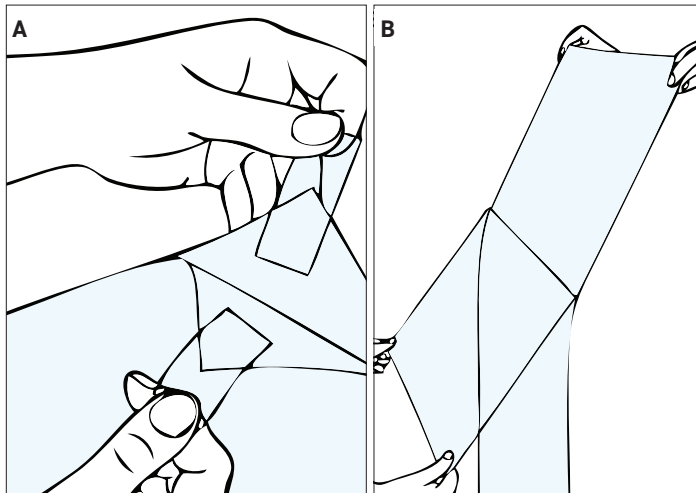
- Application solution\* (in spray container, properly mixed)
- Squeegee
- Edge guide tool
- Trimming knife
- Pressure sensitive tape
- Razor scraper
- Paper towel (a lint free towel is best)

**COMPLETELY CLEAN WINDOW**

- Place absorbent cloth on floor under the windows to collect excessive window solution.
- Wash window with solution\* and squeegee.
- Wet window with solution and scrape entire surface with razor scraper to remove any dirt particles.
- Wash and squeegee again.
- Wipe edges carefully with paper towel.
- Make sure all loose dirt is removed.

Cleaning the window completely and thoroughly is the single most important step.

\*To mix application solution, use a standard 32 ounce spray bottle full of warm distilled water mixed with 3 drops of dishwashing fluid can be used as application fluid.



**PREPARE THE FILM**

- Take the film out of the box. Remove end plugs and protective plastic sleeve.
- Save packaging to protect balance of film when job is completed. Replace end plates and place the roll back in the box. Set the box in front of window so that release liner which protects the adhesive faces installer. The film can then be unrolled directly from the box.
- Measure window glass from inside the frame and compare to width of film before starting. Film sizes are provided and bleeds are pre-determined by the installer's preference.
- Soak window thoroughly with solution.
- Have assistant hold cut film, or place film against solution soaked window with release liner facing the installer. The solution on a window will hold film in place (with scratch resistant coated polyester film, do not use wet window to hold film while removing liner).

**STEP 1**

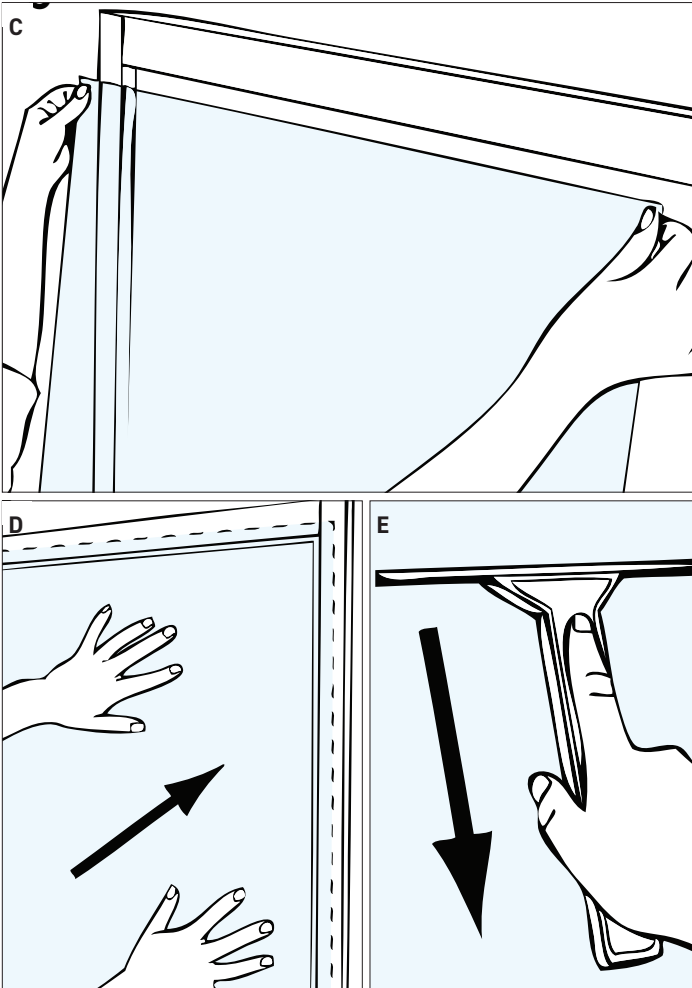
**RELEASE LINER REMOVAL**

The films are coated with pressure sensitive adhesive which must be kept clean.

The adhesive is protected with a release liner which must be removed during application. Protect the film and exposed adhesive during the entire installation procedure. Do not let it touch anything but the glass on which it is to be installed.

- Apply pressure sensitive tape on one side of an upper corner of the film. Place a second piece of tape on same corner on the reverse side of film (see diagram A). Be careful not to let exposed tacky surfaces of the tape touch each other.
- Holding one piece of tape in each hand, pull the pieces of tape apart to separate the release liner from the film.
- As you pull the liner off the film, begin to spray the adhesive surface with solution, completely soaking exposed adhesive. Continue pulling down on clear release sheet while spraying solution on adhesive. Solution will neutralize adhesive, preventing it from sticking to anything. Once initial removal of liner begins, try to pull it down evenly across the film (see diagram B). Discard release liner safely.
- With adhesive surface completely exposed, spray one final time with solution to ensure that 100 percent of adhesive is wet.

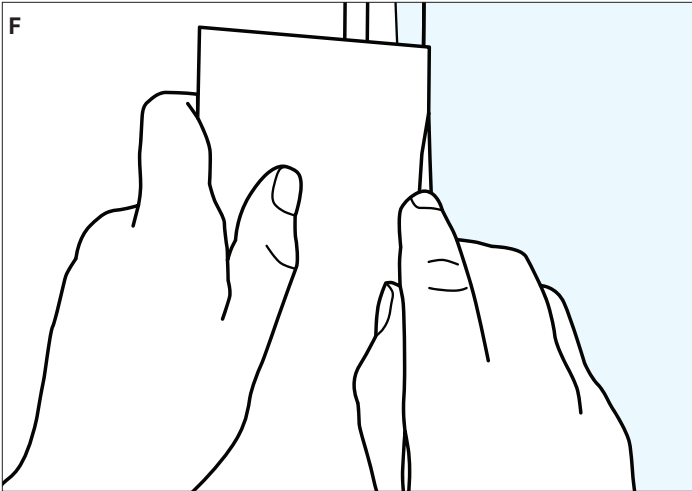
**REQUEST A TEST SAMPLE**  
If this process is new to you, we have test samples available to practice installation prior to your final install.



## STEP 2

### FILM APPLICATION

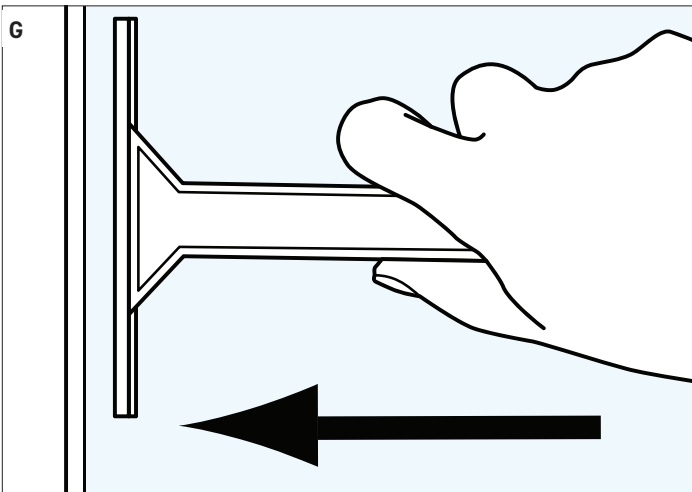
- Hold film at uppermost corners being careful not to allow film to touch floor or any other surface. Place film on window with adhesive side against glass (see diagram C).
- The application solution acts as a lubricant making the window surface slippery. You can now slide the film so that one edge of film is 1–2mm from one side of window (see diagram D). Lift film if necessary to remove large wrinkles or bubbles.
- Spray the surface side of the film facing you with solution. This acts as a lubricant for the squeegee (see note below for UV-printed window films).
- Beginning at the center of window, squeegee once to right side of window (see diagram E). Going back to the center, squeegee across to left hand edge of the window, then squeegee the window in straight, smooth strokes working from center out to the edges of the window until all excess application solution has been squeegeed out from under the film and film is lying flat. Do not be afraid to squeegee too hard, it will not damage film and it is important to remove as much water and solution from under the film. Note: the squeegee will not float across a dry surface, so re-lubricate with application solution as needed.



### STEP 3

#### FILM TRIMMING

- Butt the edge guide tool against window frame, perpendicular to glass (see diagram F).
- With trimming knife and new sharp blade, trim excess film using edge guide tool to provide a narrow straight line border. Trim the bottom and side before top, so that trimmed film will not get in your way.
- Start trimming operation from corner but do not finish cutting into corner.
- Remove and discard all film scraps.



### STEP 4

#### FINAL SQUEEGEE

Once film is completely trimmed, spray the surface once more with application solution. Repeat squeegee operation as described in Step 2 (see diagram G). Finally, using a wad of paper towels, gently wipe around edges of film to completely remove all excess water. This prevents the application solution from re-entering between the glass and film.

**Note:** many UV-curable inks are not entirely water resistant. All that were tested can be applied via wet solution, however, some added care is necessary. When applying the application solution on the film surface, squeegee within 2 minutes. A soft squeegee is necessary to prevent smudging of the ink. A piece of the release liner can be used as mask over the printed image when applying the film to glass as well.

### CLEANING & MAINTENANCE

The film can be cleaned periodically using a soap and water solution. **NEVER USE HARSH CHEMICALS OR CLEANING AGENTS, SUCH AS WINDEX, TO CLEAN THE FILM SURFACE.** The chemicals used in many window cleaning agents can attack the film's adhesive causing delamination from the window.

